

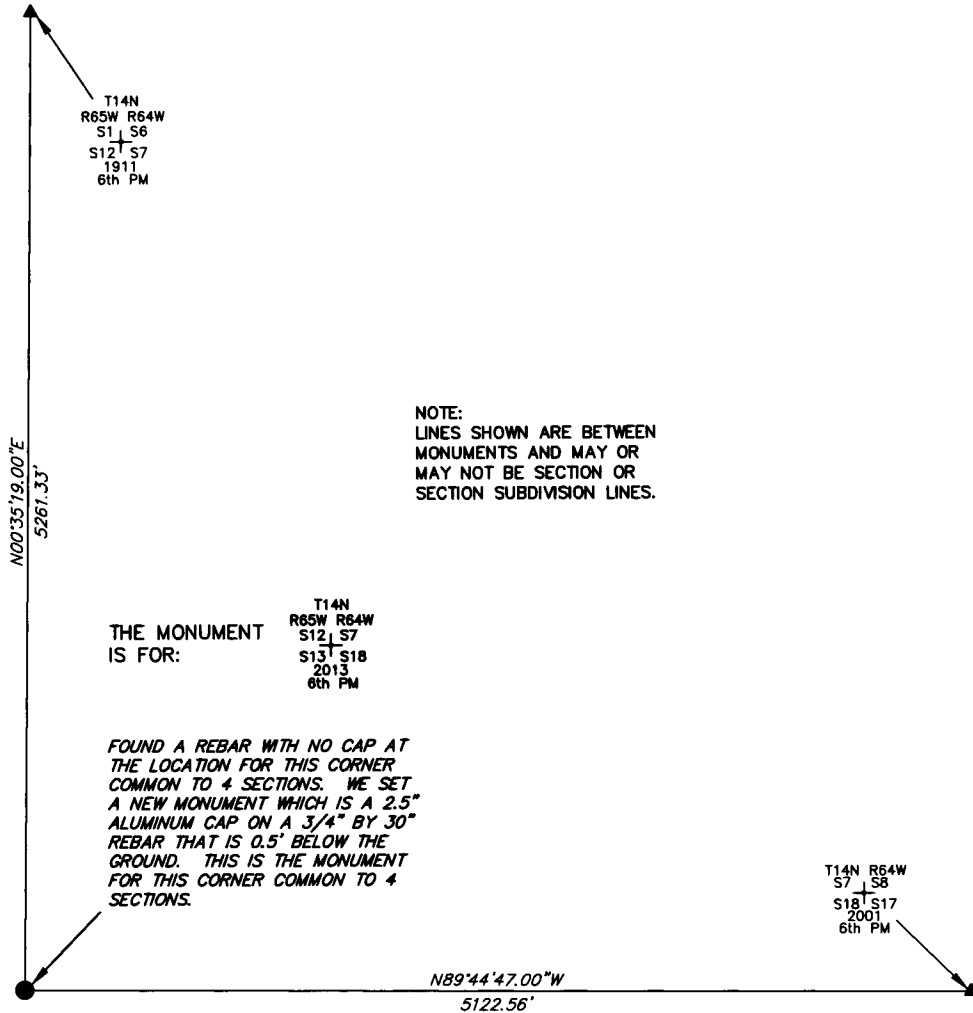
State of Wyoming Corner Record

CORNER PERPETUATION AND FILING ACT.

Regulations of the Board of Registration for Professional Engineers and Land Surveyors.)

Reverse side of this form may be used if more space is needed.

Record of original survey and citation of source of historic information (if corner is lost or obliterated). Description of corner monumentation evidence found and/or monument and accessories established to perpetuate the location of this corner. Sketch of relative location of monument, accessories, and reference points with course and distance to adjacent corner(s) (if determined in this survey). Method and rationale for reestablishment of lost or obliterated corner.



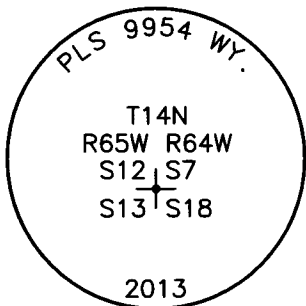
NOTE:
LINES SHOWN ARE BETWEEN
MONUMENTS AND MAY OR
MAY NOT BE SECTION OR
SECTION SUBDIVISION LINES.

THE MONUMENT
IS FOR:
T14N
R65W R64W
S12 S7
S13 S18
2013
6th PM

FOUND A REBAR WITH NO CAP AT
THE LOCATION FOR THIS CORNER
COMMON TO 4 SECTIONS. WE SET
A NEW MONUMENT WHICH IS A 2.5"
ALUMINUM CAP ON A 3/4" BY 30"
REBAR THAT IS 0.5' BELOW THE
GROUND. THIS IS THE MONUMENT
FOR THIS CORNER COMMON TO 4
SECTIONS.

T14N R64W
S7 S8
S18 S17
2001
6th PM

N89°44'47.00"W
5122.56'



THE MONUMENT IS MARKED

CORNER MONUMENT SYMBOLS

- RECORD IS FOR THIS CORNER MONUMENT.
- ▲ A RELATED CORNER OR WC MONUMENT.

SCALE 1"=1000'
(EXCEPT IN
TRIVIAL CASES)
BEARINGS ARE RELATED
TO WGS 84 WITH
GPS OBSERVATIONS
DRAWN BY: SM
P.C. D. SHANKS
COUNTY: LARAMIE



RECP #: 658203

RECORDED 4/6/2015 AT 2:31 PM BK# 2437 PG# 922
Debra K. Lathrop. CLERK OF LARAMIE COUNTY. WY PAGE 1 OF 1

Date of Field Work: 11/01/2013 Office Reference:

CROSS INDEX DIAGRAM

1	2	3	4	5	6	7	8	9	10	11	12	13	14	15	16	17	18	19	20	21	22	23	24	25	
A																									A
B																									B
C		6		5		4		3		2															C
D																									D
E																									E
F																									F
G		7		8		9		10		11		12													G
H																									H
I																									I
J																									J
K																									K
L		18		17		16		15		14		13													L
M																									M
N																									N
O																									O
P		19		20		21		22		23		24													P
Q																									Q
R																									R
S																									S
T		30		29		28		27		26		25													T
U																									U
V																									V
W																									W
X		31		32		33		34		35		36													X
Y																									Y
Z																									Z

Firm/Agency, Address

UELS, LLC

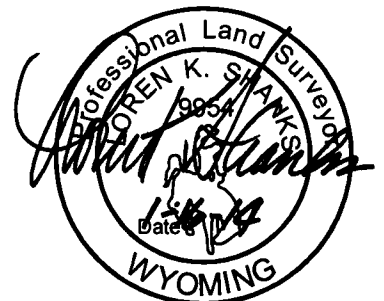
85 South 200 East

Vernal, Utah 84078

Telephone Number: 435-789-1017

This corner record was prepared
by me or under my direction
and supervision.

SEAL & SIGNATURE



CORNER COMMON TO 4 SECTIONS
Corner Name: SOUTHWEST CORNER OF SECTION 7 Section: 7 T 14N R 64W ; 6TH P.M. Cross Index No.: J-1
SBRPEPLS/PLSW: March 1994 (CLCR...SJA)